

Teacher's Fact File

There are many different types of flowers your class may find when walking through the park. Blues, yellows, purples and whites are usually the more common colours as they are best at attracting insects, such as bees and butterflies.

For this session, it is important that children understand the different parts of a flower, what they look like and what their purpose is. This can either be concentrated on before or after visiting your local park.

Petals

Petals are designed to attract as many insects as possible to visit the flower. They have two main ways of doing this.

Smell – they produce a beautiful smell which insects cannot resist.

Colour - brightly coloured flowers attract the attention of insects. However, certain colours are better for different insects. **Purple**, **Yellow** and **blue** attract bees, whereas butterflies are attracted not only to these colours, but also **oranges** and **reds**!

Sepals – green or brown

These are important for the flower while it is still at the bud stage. They are found around the bud, protecting it. Even after the bud has opened, the sepals remain and can be located under the petals.

Receptacle

The job of the receptacle is to hold all parts of the flower together. It is located at the top of the flower stem. It is very important – without this part, there would be no support for the other flower parts.

Carpel

This is the female section of the flower and is made up of three main parts.

1. **Stigma** – this is the sticky part of the carpel. Pollen sticks to it and then travels down to the style (**MA**mmy is female)
2. **Style** – it is responsible for supporting the stigma. Pollen travels down this until it reaches the ovaries. (Females have style)
3. **Ovary** – once the pollen reaches this part, it connects with the ovules.

Pollen + Ovules = Seeds!

This is known as **FERTILISATION!**

Once this process takes place, a new flower will grow appearing in spring.

The **ParkLife** project helps local people get outdoors and explore nature in Belfast's wonderful parks



Belfast
City Council



Learn: Flower Parts

Stamen

The last three letters can help children remember that this is the male part of the flower. It is here that pollen is created.

It is easily recognised as it is a yellow powder, which will rub off of fingers if touched. Ensure children realise though that if they remove too much of it, no flowers will be made as it is essential in making new plants.

The stamen has two different parts:

1. Anther – this is where the pollen is contained – insects brush against this part when they are inside the plant drinking the nectar.
2. Filament – this supports the anther.

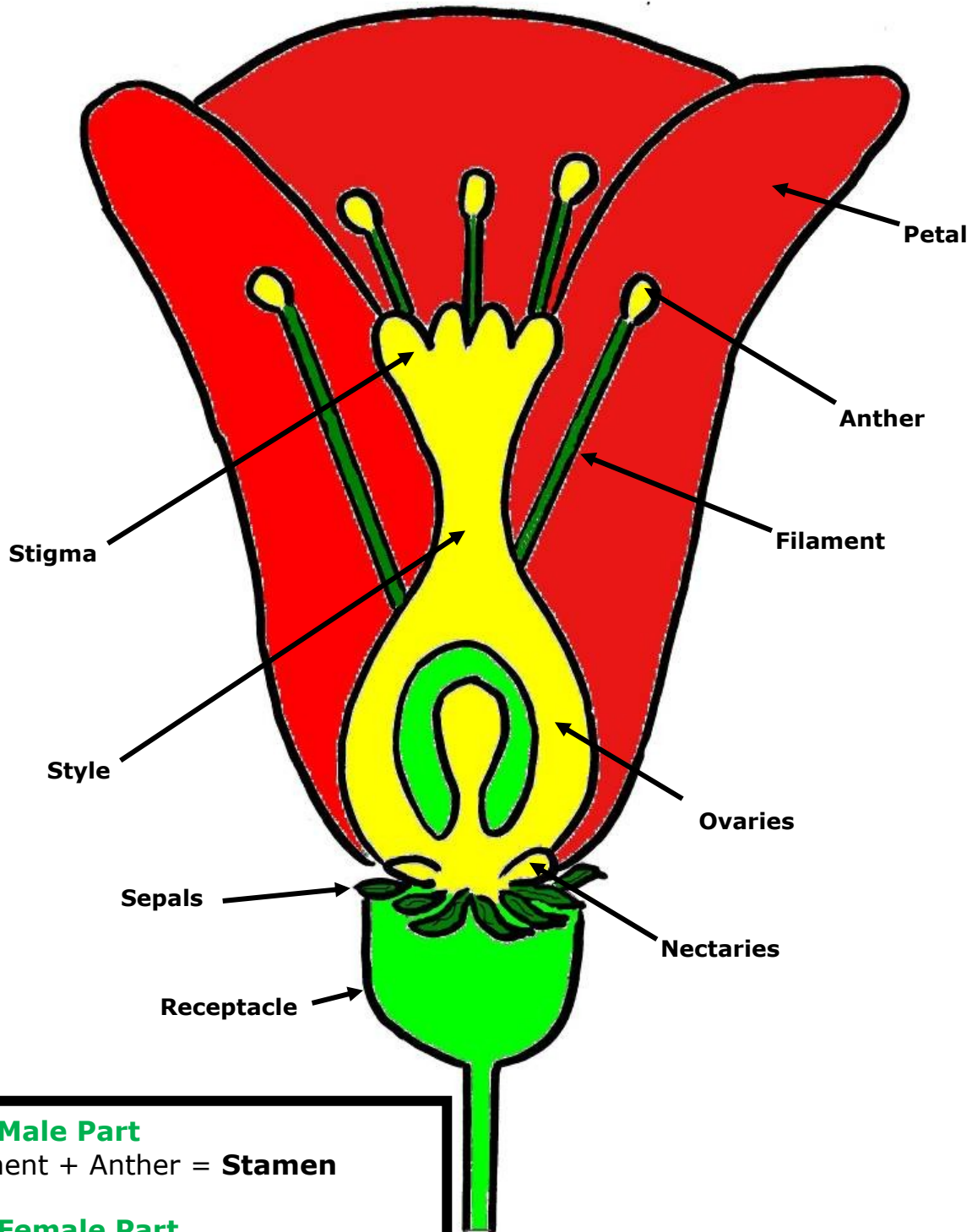
Nectaries

It is here that the sweet tasting nectar can be found – this is what insects love to drink, not only because they find it delicious, but because it gives them plenty of energy to keep flying all summer!

The flower is very clever though. It usually has the nectaries inside the flower, deep, deep down. This means that as insects crawl down, they pass the anthers, pick up some pollen and carry it onto the next flower they visit.

As the leader is going through each of the flower parts, remove them until there is nothing left. The children then have to work together to re-attach the flower. As children remember best when they can visualise things, it is best to do this activity with the help of the detachable flower.

The parts can be found below and printed out on coloured card and laminated.



The Male Part

Filament + Anther = **Stamen**

The Female Part

Stigma + Style + Ovaries = **Carpel**

The **ParkLife** project helps local people get outdoors and explore nature in Belfast's wonderful parks

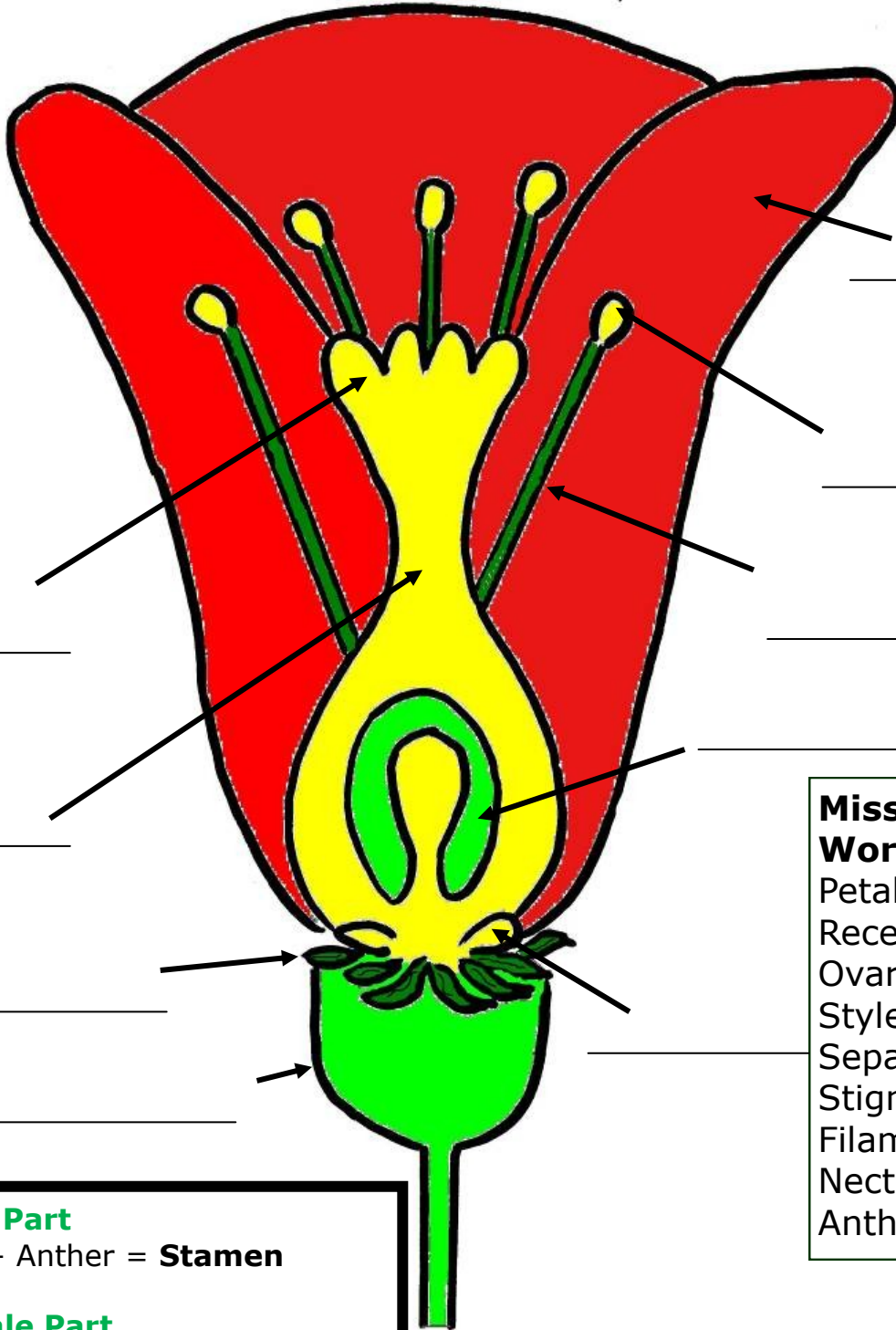


Belfast
City Council



Name: _____

The Parts of a Flower



- Missing Words:**
- Petal
 - Receptacle
 - Ovaries
 - Style
 - Sepal
 - Stigma
 - Filament
 - Nectaries
 - Anther

The Male Part
Filament + Anther = **Stamen**

The Female Part
Stigma + Style + Ovaries = **Carpel**

The **ParkLife** project helps local people get outdoors and explore nature in Belfast's wonderful parks



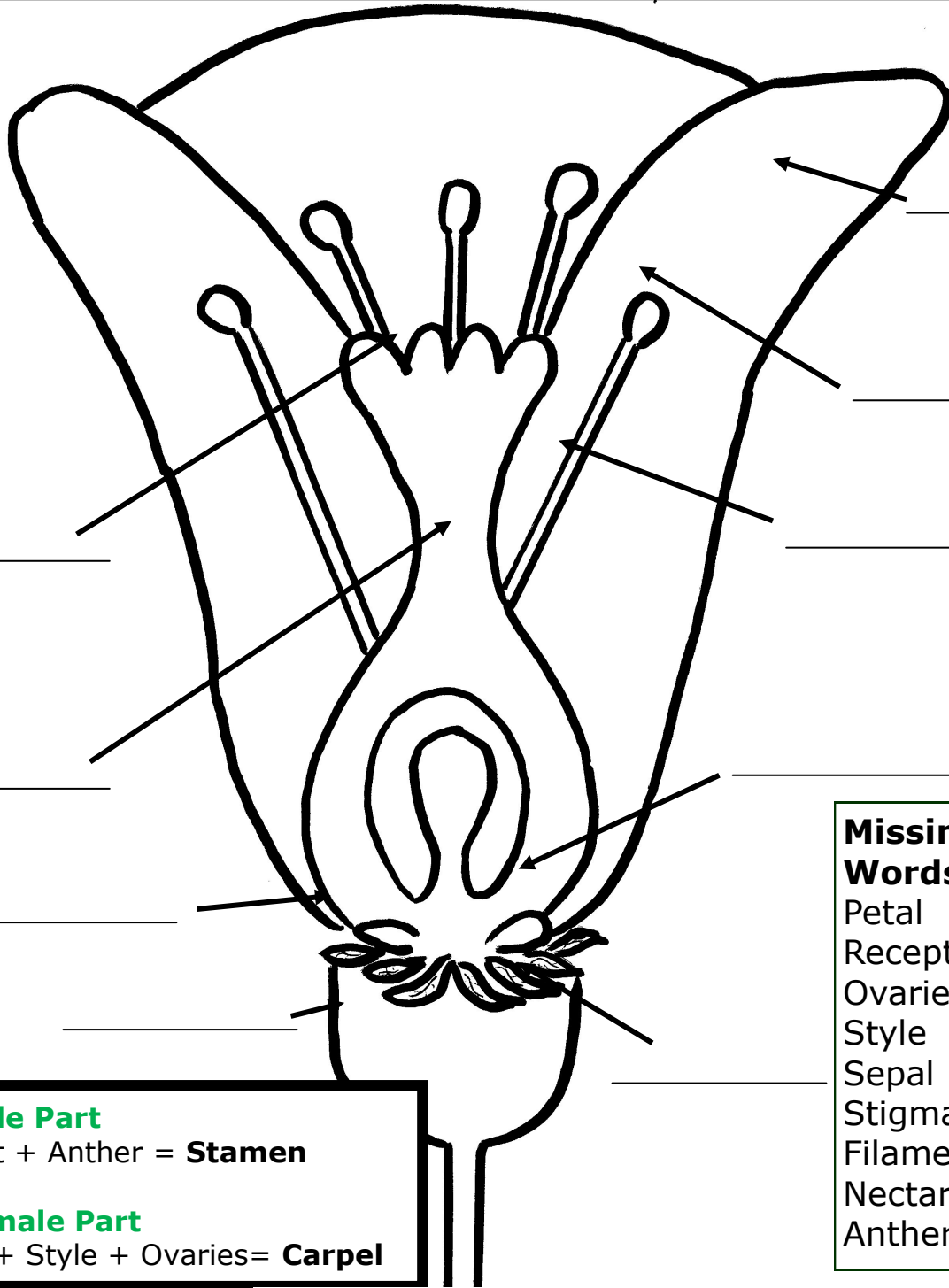
Belfast City Council



Flower Parts Colour and label

Can you colour in your own flower and label the parts?

Name: _____



The Male Part

Filament + Anther = **Stamen**

The Female Part

Stigma + Style + Ovaries = **Carpel**

Missing Words:

- Petal
- Receptacle
- Ovaries
- Style
- Sepal
- Stigma
- Filament
- Nectaries
- Anther

The **ParkLife** project helps local people get outdoors and explore nature in Belfast's wonderful parks



Belfast
City Council

